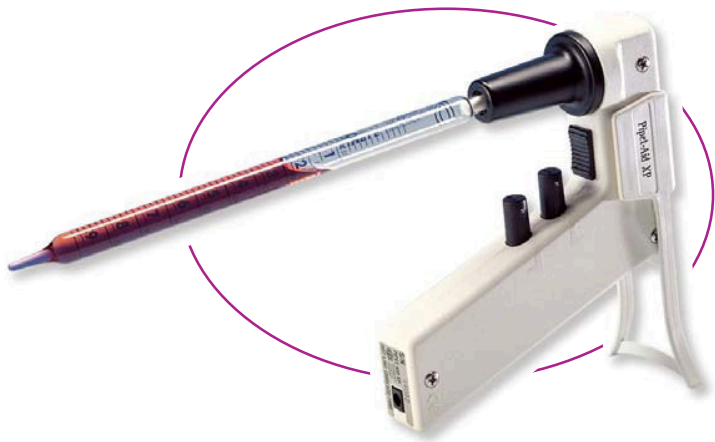


Portable Pipet-Aid® XP



- The lightweight, compact Portable Pipet-Aid®
- Three-speed settings provide more precise control for both aspirate and dispense modes
- Easy access battery replacement
- EZ Grip™ nosepiece with double membrane filter
- Removable stand
- Holster-type wall bracket included

Specifically designed to minimize operator fatigue, the Portable Pipet-Aid XP is smaller and lightweight. It accepts most pipets from 1 to 100 mL.

Each aspiration and dispense button has three speeds, (F) Fast, (M) Medium, (S) Slow. The medium speed is suitable for most routine techniques. *Fast* speed can deliver up to 50 mL in 5 seconds and can be used for rapid filling of large pipets or breaking up cell clumps. *Slow* speed is ideal when using small pipets or when more precise delivery is required. A gravity drain model is available which substitutes a gravity drain (G) function for the fast (F) mode on the dispense button.

The XP is powered by a 9 volt (Ni-MH) rechargeable battery.

A Tissue Culture Nosepiece, which features a unique filter element, will cease to allow air to pass in either direction if it becomes wet, alerting the user to possible contamination of the rubber insert.

Specifications

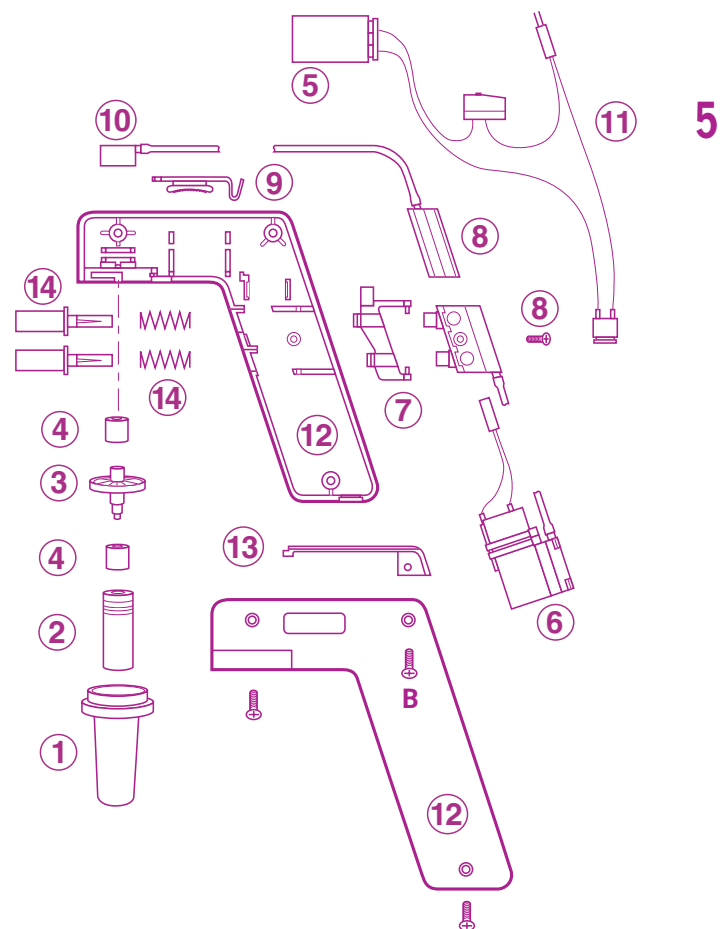
Size	5.5"
Weight	7.5 oz.
Capacity	Accepts 1 to 100 mL pipets
Battery	9 Volt Ni-MH

Cat. No.	Description
4-000-101	Portable Pipet-Aid XP supplied complete with 110 V recharger plus four replacement filters
4-000-201	Same as above but 220 V, CE
4-000-201-E	Same as above but 220 V, UK
4-000-102	Portable Pipet-Aid XP with Gravity Drain, 110 V
4-000-202	Portable Pipet-Aid XP with Gravity Drain, 220 V, CE
4-000-202-E	Portable Pipet-Aid XP with Gravity Drain, 220 V, UK

U.S. Patent Numbers: 5,214,968, 5,616,871, 5,294,405

Replacement Parts

Cat. No.	Description
4-000-002	(2) Rubber Insert (2/pk)
4-000-030	Pipet-Aid Charger 110 V, 8.7 V/8 mA
4-000-031	Pipet-Aid Charger 220 V Euro, 8.7 V/8 mA
4-000-033	Pipet-Aid Charger 220 V UK, 8.7 V/8 mA
4-000-035	(5) Ni-MH Rechargeable Battery
4-000-040	(6) Portable Motor and Pump
4-000-051	(3) Replacement Self-locking Filters (5/pk)
4-000-052	Replacement Self-locking Filters (50/pk)
4-000-057	(4) TC Rubber Gaskets (pair)
4-000-070	(14) Button Assembly XP/XL includes springs (pair)
4-000-072	(7) XP Switch Operator
4-000-073	(8) Valve Body XP/XL (complete with buttons and springs)
4-000-074	(9) XP Nosepiece Release
4-000-075	(10) XP Handle Connector
4-000-076	(11) XP Wire Harness, Switch & Terminals
4-000-077	(12) XP Handle Shell includes 2 Handle Halves and 1 Battery Door
4-000-078	(13) XP Battery Door
4-000-079	(1) EZ Grip™ Nosepiece
4-000-087	Tissue Culture Nosepiece Kit for XP, XL, and Hood Mate (includes 1, 2, 3, 4)
4-000-089	Pipet-Aid Holster-Type Wall Bracket



8 0 0 • 5 2 3 • 7 4 8 0